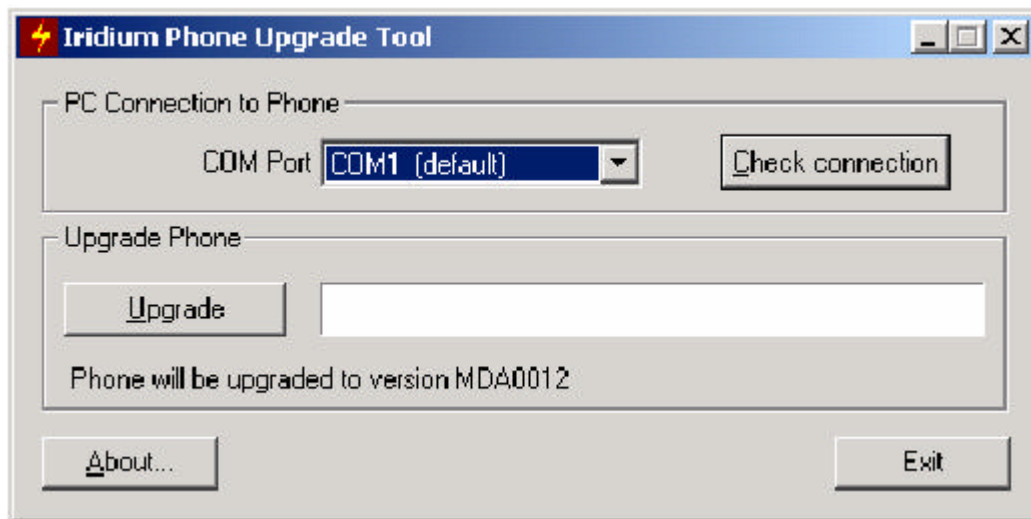


## Re-flashing instructions for the 9505A Phones

### Required Equipment/Software:

- Fully charged 9505A.
- 9505A Data Adapter.
- Serial Cable (9-Pin Male/Female). (Note: this is a “straight through” cable like the one in the 9505A data kit. A null modem cable will **not** work).
- A windows-based PC with a serial/COM port.
- “Iridium Phone Upgrade Tool” software. (Example: “UpgradeTool\_xxxxxxx.exe”, where “xxxxxxx” indicates the software version that will be flashed into the phone).



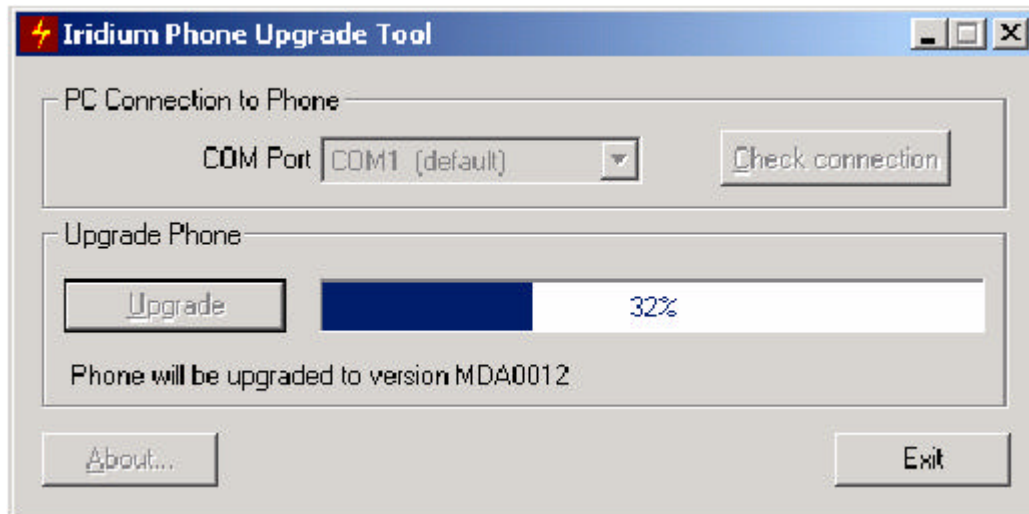
### Re-flashing Procedure:

1. Ensure that your phone is fully charged and a charger is no longer connected to the phone.
2. Connect the Data Adapter to the bottom of the phone.
3. Connect the Serial Cable from the PC COM Port to the Data Adapter.
4. Launch the Iridium Phone Upgrade Tool and choose the appropriate COM port for your PC.
5. Hold down the '5' key on the keypad while powering the phone on with the on/off button. The **backlight** will illuminate, indicating that the phone is in Upgrade Mode. (Note: The phone will only remain in Upgrade Mode for 30 seconds after power-up.)
6. In the Upgrade Tool, click “Check Connection” The following window should appear.



## Re-flashing instructions for the 9505A Phones

7. Click "Upgrade". Progress will be indicated as shown below.



8. Click "Exit" or repeat steps 1-7 to re-flash additional units.

