



Mobile Data

- SmartTRACK



- GPS Receivers

- Mobile Data Terminal



Tait mobile data solutions utilise the latest in fleet management and communications technology. Products include SmartTRAC, an off-the-shelf Automatic Vehicle Location, e-mail and messaging solution and the new Tait Mobile Data Terminal (MDT). Off-the shelf applications for the MDT include two-way status messaging, two-way text messaging, two-way e-mail and intelligent AVL.

www.tait.sk



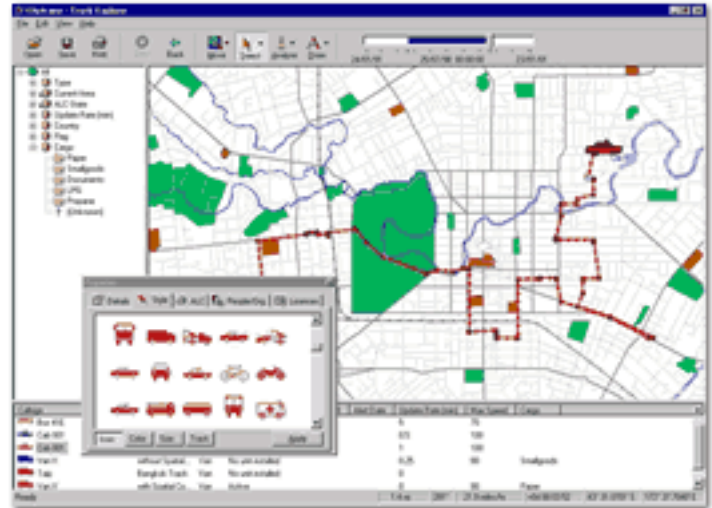
SmartTRAC

SmartTRAC

SmartTRAC, in conjunction with Absolute Communications, is a highly scalable PC based, off-the-shelf Automatic Vehicle Location (AVL) and messaging solution.

The SmartTRAC fleet management system provides automatic vehicle location and messaging applications for businesses requiring to keep track of their mobile workforce and communicate with them more effectively.

SmartTRAC currently utilises a combination of Tait T2000 trunked mobile radios, MPT1327/1343 infrastructure (TaitNet, Tait Liberty or T1810), SmartTRAC mapping and fleet management software and global positioning technology.



SmartTRAC incorporates messaging, vehicle position reporting and electronic mail functionality. Applications include mobile asset tracking, valuable consignment monitoring, planning and route analysis, ETA confirmation and mobile e-mail.

Availability

Please consult your local Tait office or authorised distributor : WRX Slovakia.

About Absolute Communications

Absolute Communications is dedicated to providing clients with the highest quality software products. Based in Christchurch, New Zealand, Absolute has contributed software consulting services to some of the largest tracking projects and are currently one of the largest suppliers of GPS tracking software. Clients use Absolute's software to gain competitive advantage through better coordinating their company's operations. Additional benefits also include lower fleet management overheads and improved levels of safety to staff and customers.

For more information on Absolute Communications or to download a free evaluation copy of SmartTRAC, visit their website at

<http://www.AbsoluteCommunications.com/>

www.tait.sk



GPS Receivers



Scout GPS Receiver

The Scout GPS Receiver is an economical, low profile GPS receiver/antenna solution. The Scout is configured to plug directly into the T2000 trunked mobile, eliminating the need for an additional (and potentially costly) external device. The trunked mobile radios must be fitted with a single port UART and direct connect GPS mobile firmware.

For further information, talk to your local Tait office or authorised dealer. Direct connect GPS technical notes are located in the technical support section.

www.tait.sk



T630 Mobile Data Terminal



The new Tait T630 Mobile Data Terminal is a highly robust unit with a high quality LCD display and flexible mounting options. Off the shelf applications include two way text and status messaging, intelligent AVL and two way e-mail.

The T630 MDT has a Field Upgrade Port, which allows quick and easy software upgrades (PC based) via an RS232 serial port. The MDT allows greater flexibility for future functionality expansion, providing one general purpose external I/O (input/output) and one spare RS232 serial port.

The new and enhanced Tait T630 Mobile Data Terminal (MDT) is the latest addition to our range of mobile data products. "Off-the-shelf" applications include:

- * Two-way text messaging
- * Two-way status messaging
- * Intelligent Automatic Vehicle Location
- * Two-way e-mail messaging

The T630 MDT will initially be available for connection to a MAP27 compliant trunked radio with a conventional radio interface available mid 2001.

The MDT features a hard wearing robust casing and high quality LCD display. The LCD supports 5 lines of text at 40 characters per line plus a 2 line menu. The display is a graphical display which also provides support for proportional text. Back-lighting allows effortless operation and has a user adjustable contrast for ease of viewing.

The MDT is easy to use with 8 multifunctional soft-keys and an intuitive user interface. The addition of an optional PC AT keyboard allows for even greater user flexibility and provides for ease of navigation. The T630 MDT has flexible mounting options allowing in-vehicle installation to customer requirements.

Up to 30 predefined status messages can be stored to access at the users convenience. All messages received (whether status, text or e-mail) store the date and time the message was received, the originating address and the body text of the message. On-board memory allows for approximately 56kB of user storage space in the inbox/outbox at any given time and users can delete or refer to existing messages as required. The T630 MDT also supports a built in address book where frequently used addresses can be stored.

Additional features include a power saving device where back-lighting turns off after a predetermined period of time, a real time clock with battery backup in case of power failure and a piezo buzzer.

MDT functionality is determined by the choice of firmware (standard or enhanced) and the choice of either a simple or a multihead octopus cable. The standard and enhanced packages offer the following features:

Standard MDT package provides

- *status messages receive and transmit
- *text messages receive
- *text messages transmit (with addition of AT PC keyboard)
- *PC keyboard interface
- *ASCII printer interface
- *MAP27 connectivity

Enhanced MDT package provides

- *status messages receive and transmit
- *text and e-mail messages receive
- *text and e-mail messages transmit (with addition of AT PC keyboard)
- *GPS poll
- *GPS location display
- *Basic GPS geo-fencing
- *PC keyboard interface
- *ASCII printer interface
- *MAP27 connectivity

A command protocol document specifying over the air protocol is available upon request. This allows third party PC based applications to be interfaced with "off-the-shelf" MDT applications. Also available is a Software Developers Kit, which allows system integrators to develop their own applications for the MDT. The main processor is a high speed CMOS device, allowing low cost development of niche applications.



T630 Mobile Data Terminal

General Specifications

General Specifications

Type/Model

Tait T630 Mobile Data Terminal

User Interface

- * Graphical LCD screen (240 x 60 pixels, 127mm x 43mm, 5" x 1.3")
- * 40 characters x 5 line text display (supports proportional text)
- * 2 line menu - 1 line menu bar, 1 line status bar
- * 8 configurable soft keys

Tait Radio Interface

RS232 1200/9600 bps
UADG MAP27 version 1.5

GPS Receiver Interface

NMEA 0183
RS232 4800 bps

Printer Interface

RS232 1200, 4800, 9600, 19200, 38400, 57600 bps
XON/XOFF protocol

Service Interface

Tait PGM630 software via RS232

Options

- * AT PC keyboard
- * Spare RS232 interface
- * Optional 4kB flash

Processor

High speed CMOS microprocessor

- * 128kB on-board flash
- * 4kB on-board data memory
- * 4kB on-board EEPROM

Size (W x H x D)

190 x 80 x 50 mm
7.5" x 3.1" x 2"

Weight

570g
1lb 4oz

Supply Voltage

13.8V nominal

Estimated Current Requirements

MDT on / Back-lighting off 200mA
MDT on / Back-lighting on 400mA

Environmental Specifications

Operating temperature 0° to 50° C
Storage temperature 0° to 70° C

EMC Specifications

As per category EN 300 279 V1.2.1

Technical Compliance

For details of technical compliance, please contact your nearest Tait office or authorised dealer.

Availability

Please consult your local Tait office or authorised dealer for availability in your region.

www.tait.sk



Contact Us



WRX Slovakia Limited
Cernysevskeho 26
851 01 Bratislava
Slovakia (Europe)

Tel. +421 / 7 / 624 10 636
Fax. +421 / 7 / 624 10 637
(Area Code 7 expired Juny 30, 2001)

Tel. +421 / 2 / 624 10 636
Fax. +421 / 2 / 624 10 637
(New Area Code after date of expire)

Email:

info@wrx.sk
info@tait.sk

Web:

<http://www.wrx.sk>
<http://www.tait.sk>
<http://www.vtel.sk>
<http://motorola.wrx.sk>
<http://kenwood.wrx.sk>

www.tait.sk